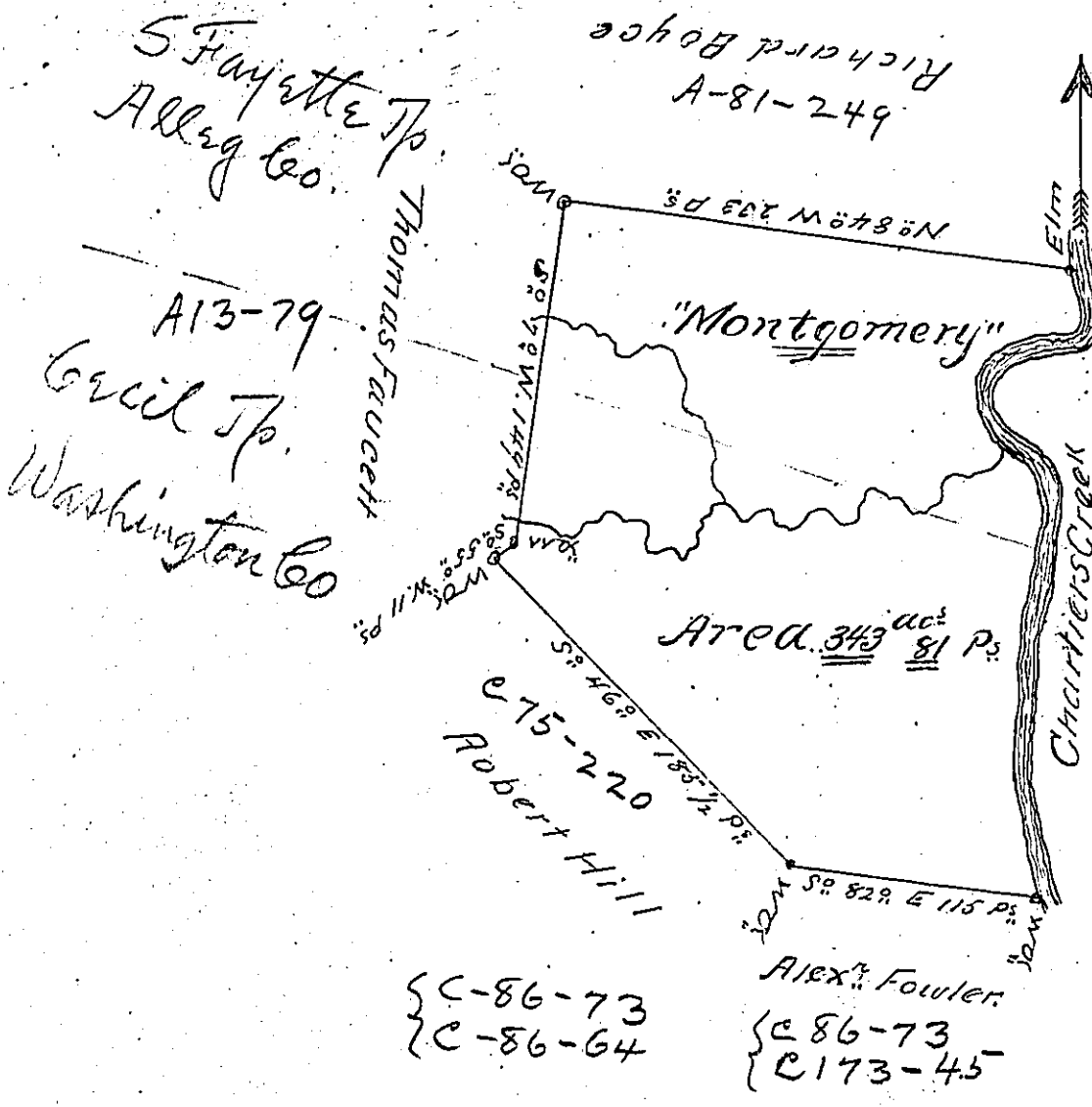


Courses & Dist^{ces}
down Chartiers Cr.

No 12° W 114 P ^s
No 6° E 121 A ^s
No 45° W 39 A ^s
No 5° E 22 A ^s
No 59° E 17 A ^s
No 80° E 27 A ^s
No 6° W 29 A ^s Elm
<u>Total 319</u>



Upper St Clair Tp.
Alleg. Co.

Peters Tp.
Washington Co.
C-177-85

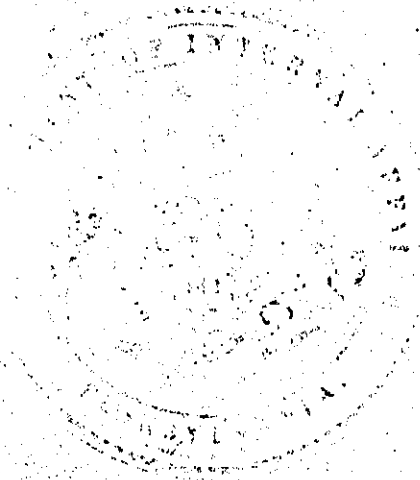
{ C-86-73
C-86-64 } Alex. Fowler
{ C-86-73
C-173-45 }

A Draught of a Survey called "Montgomery" situate on Chartiers Cr. in Washington County containing 343 acs 81 P^s strict Measure executed May the 22^d. 1786 in consequence of a Certif^{ic} for 400 acs granted to Stephen Richards by the Commiss^{ns} appointed by Virginia to adjust the Claims to unpatented Lands in the Counties Monong^a. Yohg^a and Ohio and duly entered with the County Survr^s as appears from the List of Entries transmitted from the Survr^s Gen^l Office - 22^d Apr. 80 -

Ret 15 May 87

Jⁿ. Laurens Esq^r. S. Gen^l. }
Presley Nevill } 1987
Matt^r. Ritchie }

IN TESTIMONY that the above is a copy of the original remaining on file in the Department of Internal Affairs of Pennsylvania, made conformably to an Act of Assembly approved the 16th day of February, 1833, I have hereunto set my Hand and caused the Seal of said Department to be affixed at Harrisburg, this nineteenth day of October 1903



James P. Brown
Secretary of Internal Affairs.